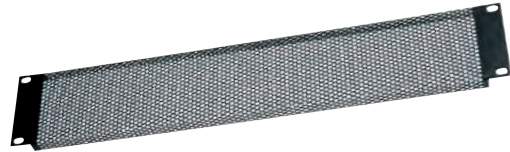


Vent Panels



VTB-1



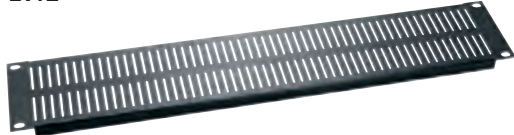
VT2



VTF2



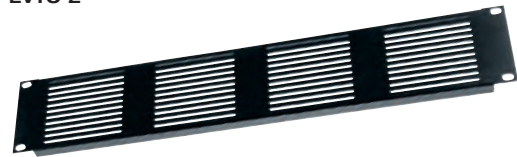
EVT2



EVTA-2



EVTC-2



VTP-2



CVTP-2

Light Blocking Vent Panels

A&E SPEC.
96-050-1

This vent panel is the ideal solution for installations where a high open percentage area (64%) vent is needed, and it is desirable to conceal the internal cabling. Includes pre-installed light blocking material. Constructed from 18-gauge perforated steel, flanged for extra strength, and finished in a black powder coat.

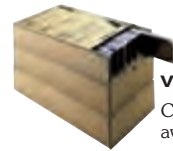
Part #	Racking Height
VTB-1	1 3/4" (1 space)
VTB-2	3 1/2" (2 space)
VTB-3	5 1/4" (3 space)

VT Vent Panels

A&E SPEC.
96-050-1

With the highest percentage of open area found on any of our vent panels (64%), all VT Series products are made from 18-gauge perforated steel, and are flanged for extra strength. Black powder coat finish.

Part #	Racking Height	Contractor Packs	
		Part #	Qty
VT1	1 3/4" (1 space)	VT1-CP12	12
VT2	3 1/2" (2 space)	VT2-CP12	12
VT3	5 1/4" (3 space)	VT3-CP6	6
VT4	7" (4 space)	VT4-CP6	6



VT2-CP12
Contractor packs available!

VTF Vent Panels

A&E SPEC.
96-050-1

The tight perforated pattern found in the VTF Series of vent panels limits viewing for aesthetics. Flanged, made from 18-gauge steel, with a 25% open area. Black powder coat finish.

Part #	Racking Height	Contractor Packs	
		Part #	Qty
VTF1	1 3/4" (1 space)	VTF1-CP12	12
VTF2	3 1/2" (2 space)	VTF2-CP12	12
VTF3	5 1/4" (3 space)	VTF3-CP6	6
VTF4	7" (4 space)	VTF4-CP6	6



VTF4-CP6
Contractor packs available!

EVT Vent Panels

A&E SPEC.
96-050-1

Featuring an aesthetically pleasing vertical slotted design, EVT Series vent panels have a 17% open area and are available with a 16-gauge steel construction in a black powder coat finish (EVT) or an aluminum construction with a choice of a black brushed and anodized (EVTA) or silver brushed and anodized finish (EVTC).

Black Powder Coat Part # (Steel)	Black Anodized Part # (Aluminum)	Silver Anodized Part # (Aluminum)	Racking Height
EVT1	EVTA-1	EVTC-1	1 3/4" (1 space)
EVT2	EVTA-2	EVTC-2	3 1/2" (2 space)



HOT TIP!
Choose a vent pattern that best complements the aesthetics of the rackmount equipment

Contractor Packs

Part #	Qty
EVT1-CP12	12
EVT2-CP12	12



EVT1-CP12
Contractor packs available!

VTP/CVTP Vent Panels

A&E SPEC.
96-050-1

Highly aesthetic with an attractive horizontal slotted design, the rust-resistant VTP Series is flanged, made from 16-gauge aluminum and has a 20% open area. Black brushed and anodized or silver brushed and anodized finish.

Black Anodized Part #	Silver Anodized Part #	Racking Height
VTP-1	CVTP-1	1 3/4" (1 space)
VTP-2	CVTP-2	3 1/2" (2 space)
VTP-3	CVTP-3	5 1/4" (3 space)